



**TOP OF
HEAD**
(GREEN FELT)

HEAD SIDE (x2)
(GREEN FELT)

NOTE: CUT ALONG ANY DOTTED LINES,
WHEN AVAILABLE. THE GRAY MARGINS
WILL BE USED TO PLACE HOT-GLUE FOR
ATTACHING OTHER PIECES.

BASE
(TAN FELT)

A white, irregularly shaped piece of felt for a jaw, with a dashed line for cutting and a gray margin for gluing.

JAW
(TAN FELT)

A white, mitten-like piece of felt for an arm, with a dashed line for cutting and a gray margin for gluing.

ARM
(x2)
(GREEN FELT)

A large white, irregularly shaped piece of felt for a body, with a dashed line for cutting and a gray margin for gluing.

BODY (x2)
(GREEN FELT)

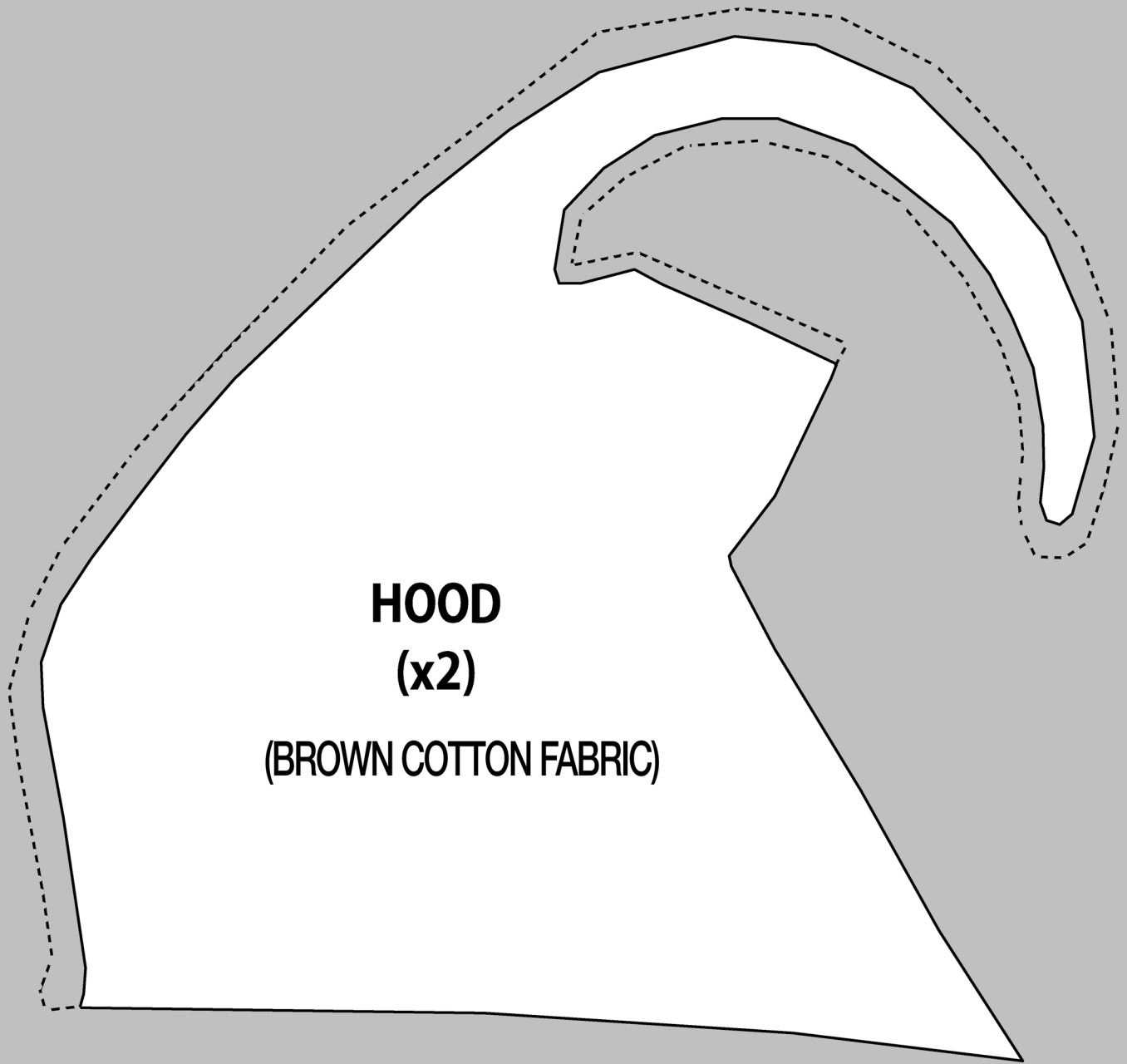
NOTE: CUT ALONG ANY DOTTED LINES,
WHEN AVAILABLE. THE GRAY MARGINS
WILL BE USED TO PLACE HOT-GLUE FOR
ATTACHING OTHER PIECES.

A white, mitten-like piece of felt for a foot, with a dashed line for cutting and a gray margin for gluing.

FOOT
(x2)
(GREEN FELT)

A white, irregularly shaped piece of felt for a belly, with a dashed line for cutting and a gray margin for gluing.

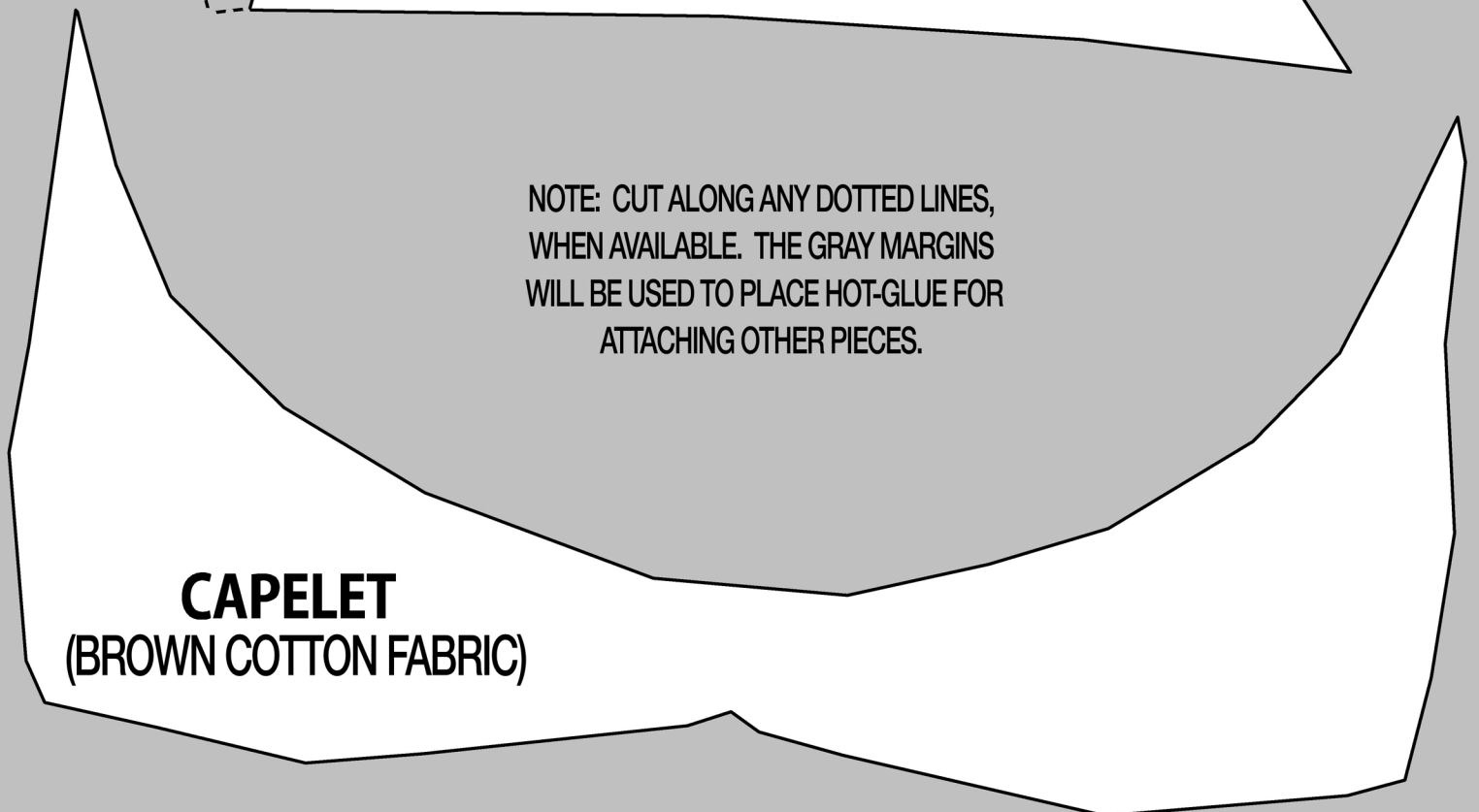
BELLY
(TAN FELT)



HOOD
(x2)

(BROWN COTTON FABRIC)

NOTE: CUT ALONG ANY DOTTED LINES,
WHEN AVAILABLE. THE GRAY MARGINS
WILL BE USED TO PLACE HOT-GLUE FOR
ATTACHING OTHER PIECES.



CAPELET
(BROWN COTTON FABRIC)

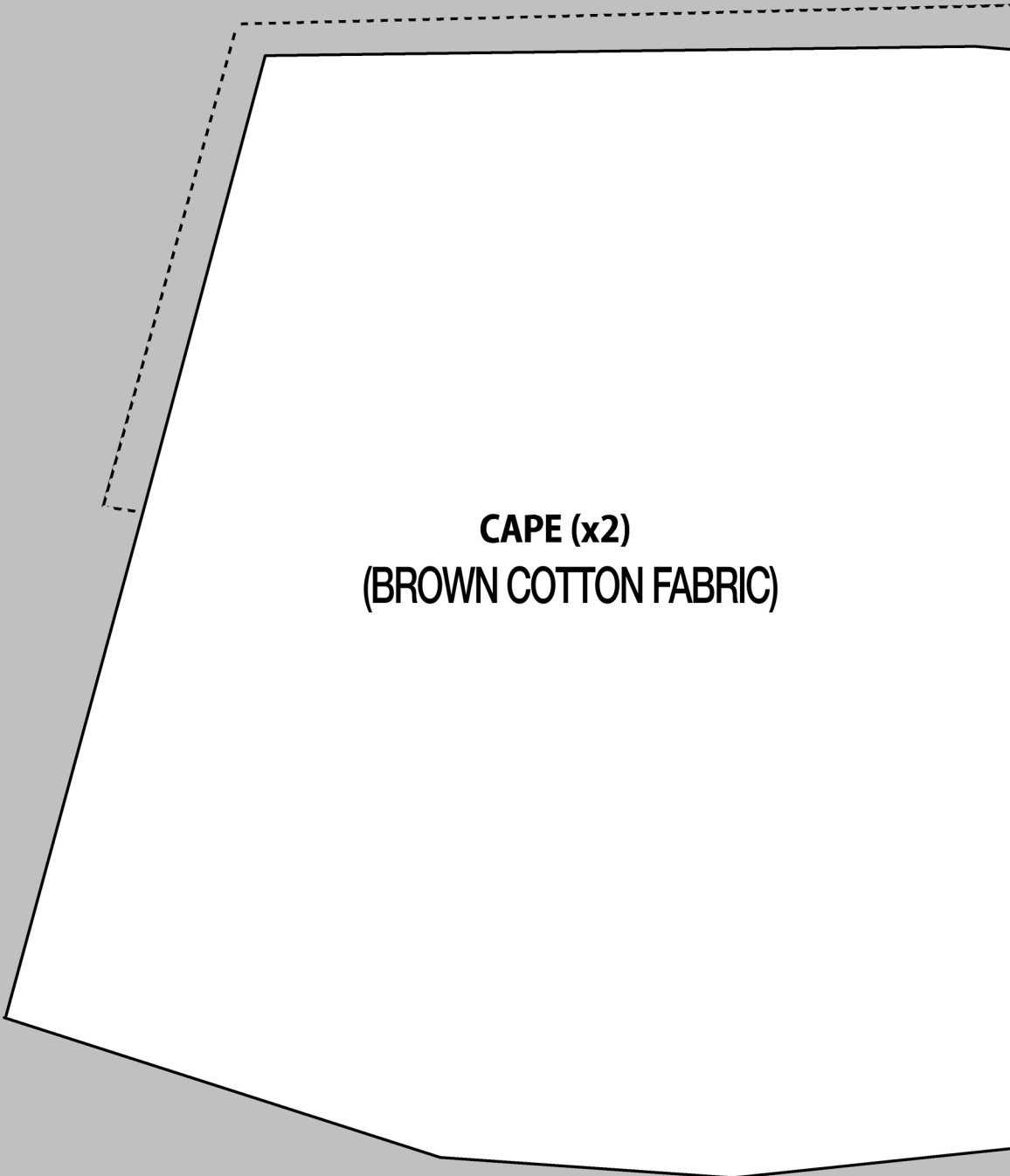
TOOTH & EYE (x2)
(WHITE FELT)



PUPIL (x2)
(BLACK FELT)



CAPE (x2)
(BROWN COTTON FABRIC)



NOTE: CUT ALONG ANY DOTTED LINES,
WHEN AVAILABLE. THE GRAY MARGINS
WILL BE USED TO PLACE HOT-GLUE FOR
ATTACHING OTHER PIECES.